

CONTENTS

	English	Français	Deutsch
Setting Instruction	P.2 - P.8	P.9-P.15	P.16-P.22

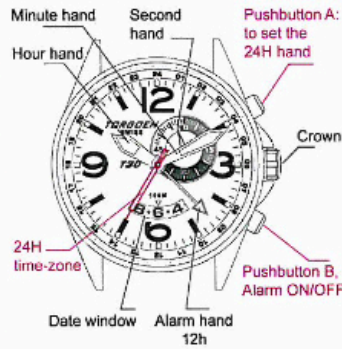
P1

English

P2

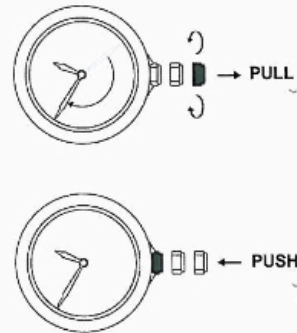
SETTING INSTRUCTION

PRESENTATION



P3

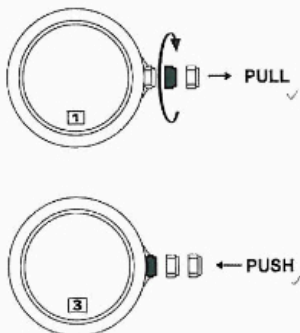
**SETTING THE TIME
HOUR AND MINUTE**



P4

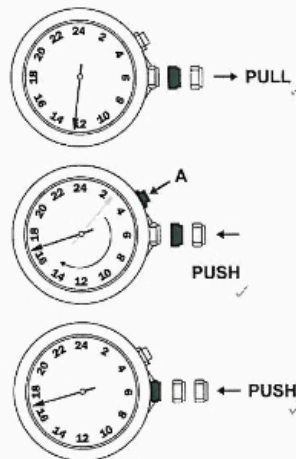
SETTING THE DATE

CAUTION: NEVER CORRECT DATE BETWEEN 21:00 AND 00:30. (12:30AM)



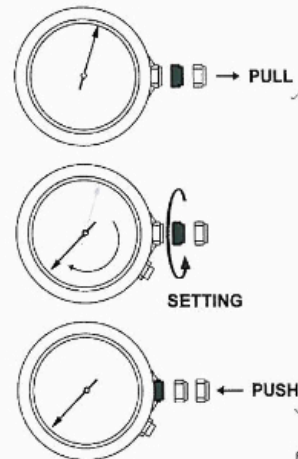
P5

2nd TIME ZONE



P6

ALARM TIME SETTING



P7

ON / OFF ALARM



2 "BIP" ALARM ON
1 "BIP" ALARM OFF



STOP ALARM

P.8

Français

P.9

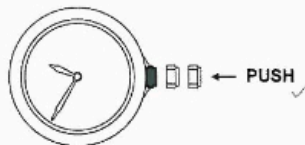
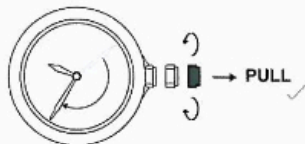
INSTRUCTIONS DE RÉGLAGE POUR

PRÉSENTATION



P.10

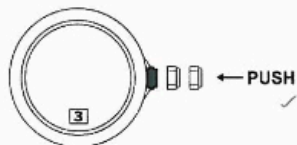
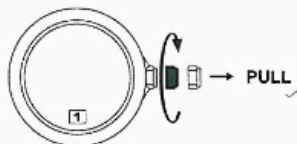
REGLAGE DE L'HEURE ET MINUTE



P.11

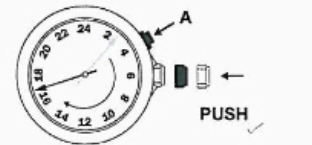
CORRECTION DE LA DATE

ATTENTION: LA CORRECTION DE LA DATE NE PEUT PAS SE FAIRE ENTRE 21:00 ET 00:30.



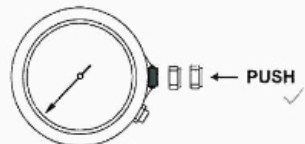
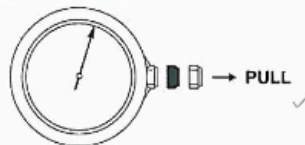
P.12

2eme FUSEAU HORAIRE



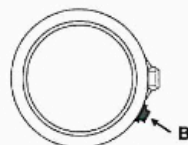
P.13

REGLAGE DE L'HEURE DE L'ALARME

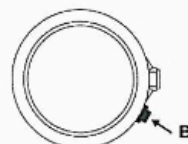


P.14

ACTIVATION / DESACTIVATION DE L'ALARME



2 "BIP" ALARM ON
1 "BIP" ALARM OFF



STOP ALARM

P.15

Deutsch

P.16

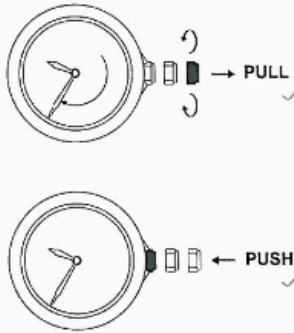
EINSTELLUNG DER

ANSICHT



P 17

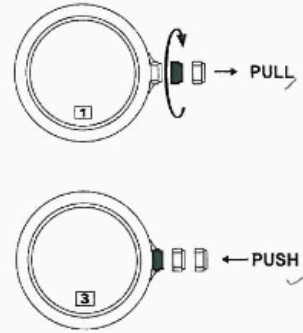
EINSTELLEN DER ZEITANZEIGE STUNDEN UND MINUTEN



P 18

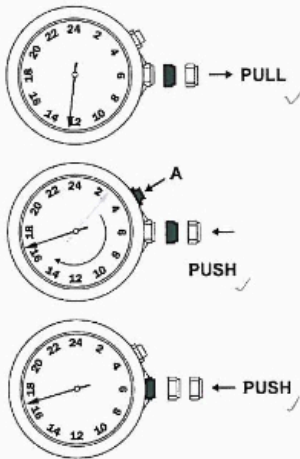
EINSTELLEN DES DATUMS

ACHTUNG: DATUM NICHT
ZWISCHEN 21:00 UND 00:30.



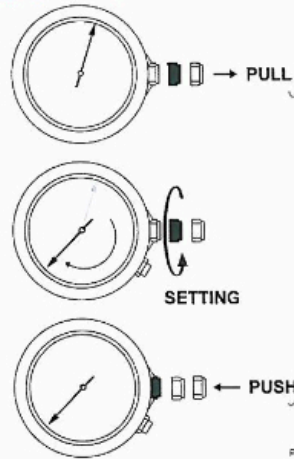
P 19

ZWEITE ZEITZONE



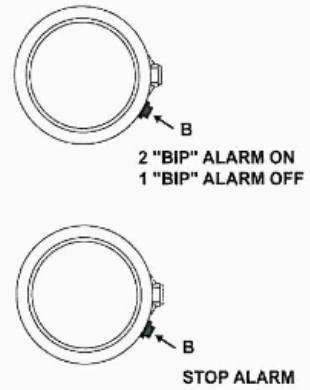
P 20

EINSTELLEN DER ZEIT DES ALARMS



P 21

AKTIVIEREN / DESAKTIVIEREN DES ALARMS



P 22