

## CONTENTS

	English	Français	Deutsch
Setting Instruction	P.2 - P.8	P.9-P.15	P.16-P.22

P1

English

P2

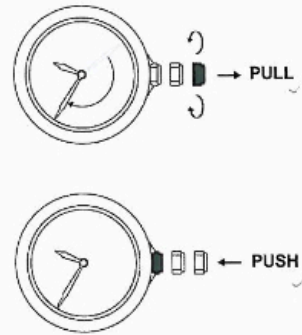
## SETTING INSTRUCTION

### PRESENTATION



P3

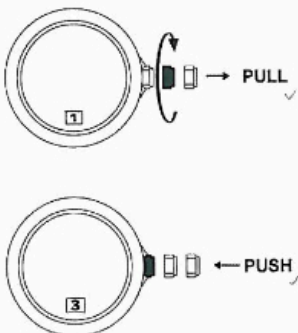
## SETTING THE TIME HOUR AND MINUTE



P4

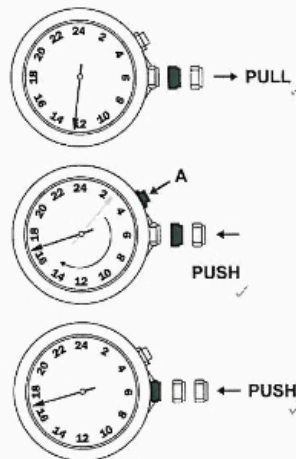
## SETTING THE DATE

**CAUTION:** NEVER CORRECT DATE BETWEEN 21:00 AND 00:30. (12:30AM)



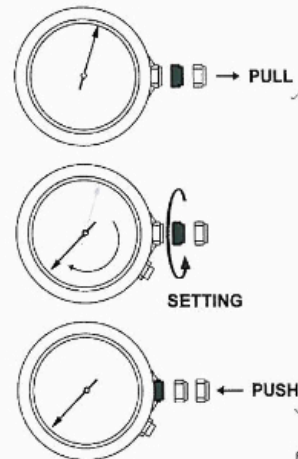
P5

## 2nd TIME ZONE



P6

## ALARM TIME SETTING



P7

## ON / OFF ALARM



2 "BIP" ALARM ON  
1 "BIP" ALARM OFF



STOP ALARM

P.8

Français

P.9

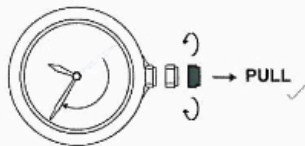
## INSTRUCTIONS DE RÉGLAGE POUR

### PRÉSENTATION

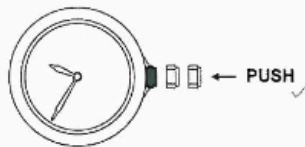


P.10

## REGLAGE DE L'HEURE ET MINUTE



PULL ✓

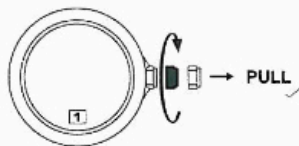


PUSH ✓

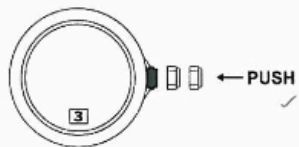
P.11

## CORRECTION DE LA DATE

ATTENTION: LA CORRECTION DE LA DATE NE PEUT PAS SE FAIRE ENTRE 21:00 ET 00:30.



PULL ✓



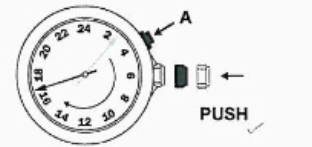
PUSH ✓

P.12

## 2eme FUSEAU HORAIRE



PULL ✓



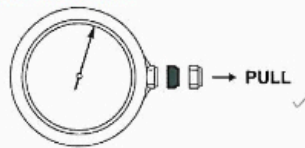
PUSH ✓



PUSH ✓

P.13

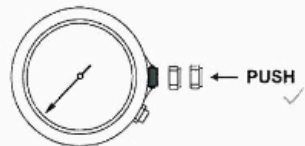
## REGLAGE DE L'HEURE DE L'ALARME



PULL ✓



SETTING



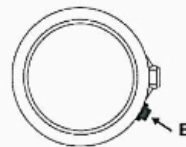
PUSH ✓

P.14

## ACTIVATION / DESACTIVATION DE L'ALARME



2 "BIP" ALARM ON  
1 "BIP" ALARM OFF



STOP ALARM

P.15

Deutsch

P.16

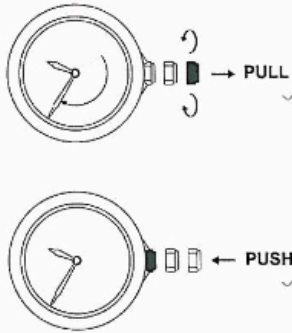
## EINSTELLUNG DER

### ANSICHT



P 17

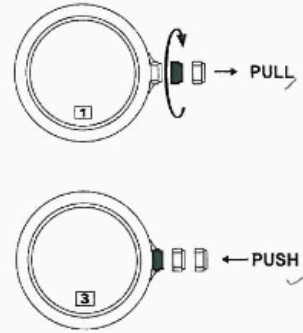
## EINSTELLEN DER ZEITANZEIGE STUNDEN UND MINUTEN



P 18

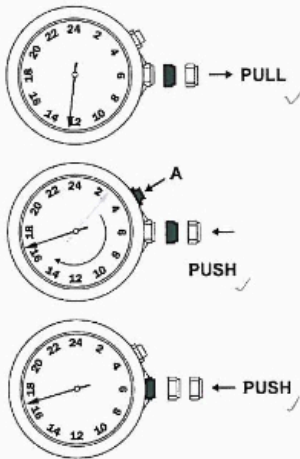
## EINSTELLEN DES DATUMS

**ACHTUNG:** DATUM NICHT  
ZWISCHEN 21:00 UND 00:30.



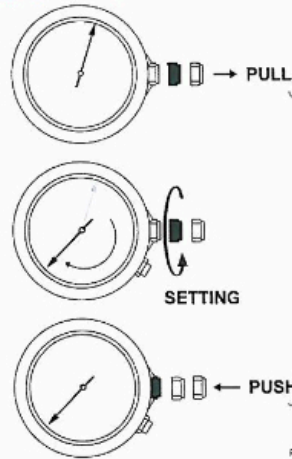
P 19

## ZWEITE ZEITZONE



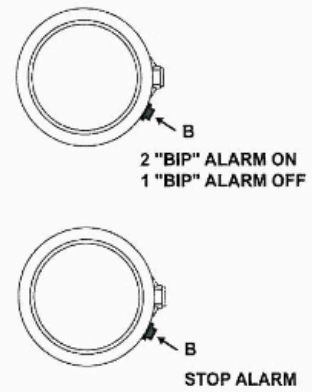
P 20

## EINSTELLEN DER ZEIT DES ALARMS



P 21

## AKTIVIEREN / DESAKTIVIEREN DES ALARMS



P 22